

## Appendix 1

### Cornwall Road – Red Line Boundary

The plan below illustrates the red line boundary plan for Cornwall Road development site.

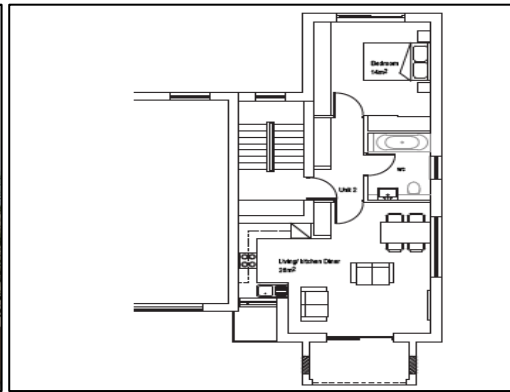
The land marked red will be redeveloped to provide 3 one-bedroom flats and 6 two-bedroom flats for social rent.



### Cornwall Road – Planning Approved Design and floor layout.



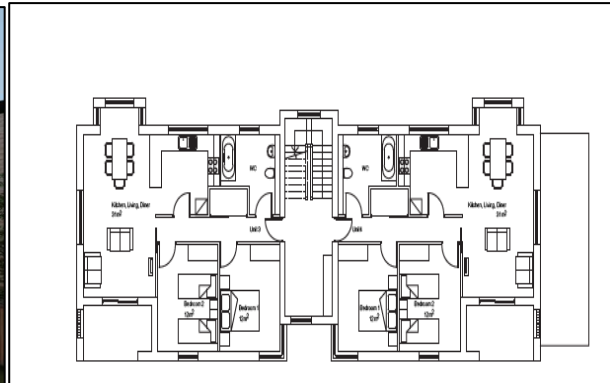
Cornwall Road block 1 – 3 one-bedroom flats



Typical floor plan block 1



Cornwall Road – block 2 – 6 two-bedroom flats

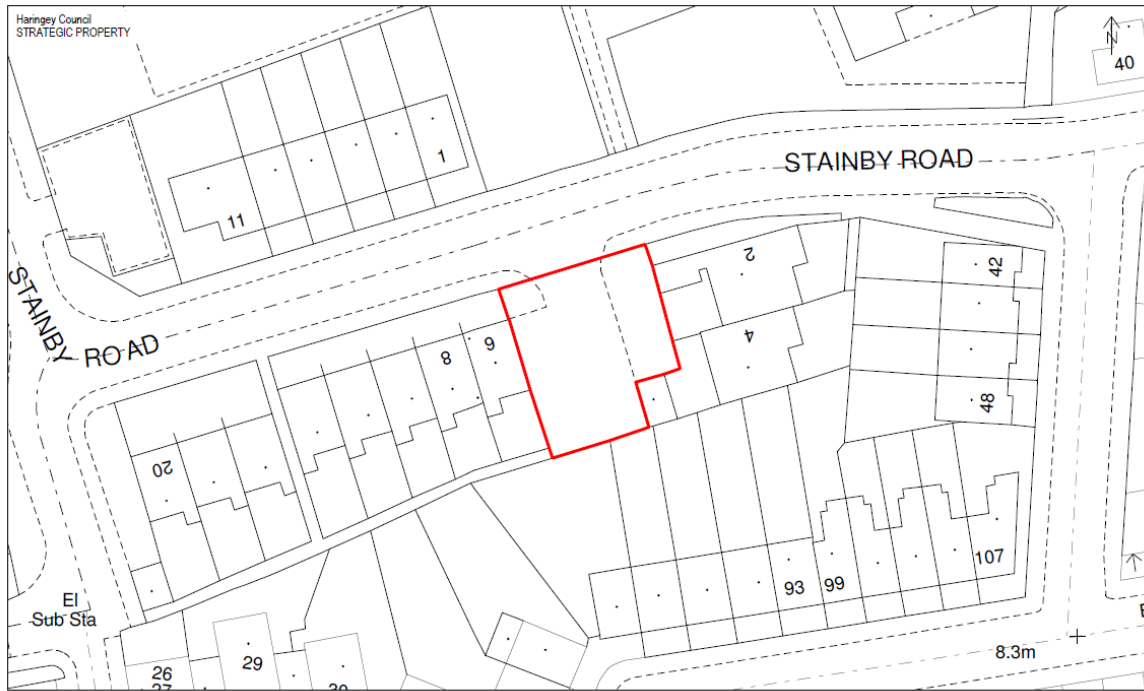


Typical floor plan block 2

## Stainby Road car park – Red Line Boundary

The plan below illustrates the red line boundary plan for Stainby Road car park development site.

The land marked red will be redeveloped to provide 2 houses for social rent.



This product includes mapping data licensed from Ordnance Survey with the permission of the Controller of Her Majesty's Stationery Office. © Crown Copyright 2019 LBH. All rights reserved. Licence number 100019199

8 Stainby Road  
London  
N15 4FJ

Scale  
0 2 4 6 8 10 m

Site Area (hectares):

Overlay: Hss - Misc  
Plan produced by Sean Puroell on 19/03/2019

Scale 1:500  
BVES drawing no. A4 misc.

## Stainby Road car park – Planning Approved Design and floor layout



Stainby Road - 2 houses

Floor plan